



videolP·X·Point

GRAPHICAL VIDEO IP ROUTING

Video IP·X·Point is a graphical user interface (GUI) that greatly simplifies the configuration of Video IP addresses for SAPEC encoders and decoders. The user can make graphically the configuration by clicking on a unit interface and dragging the mouse to the interface of another unit, without any knowledge of networks or IP routing.

Video IP·X·Point allows to manage the Video IP interface with the **FastIPSync®** technology:

- Easily linking one encoder with one or several decoders (unicast or multi-unicast with two streams)
- Configuring the interface of decoders (performs monitoring functions receiving one Transport Stream and sending it to another destination)

Video IP·X·Point allows to save the routing of units to a configuration file. It is possible, therefore, to make a routing change in the units or load a different configuration using a configuration file.

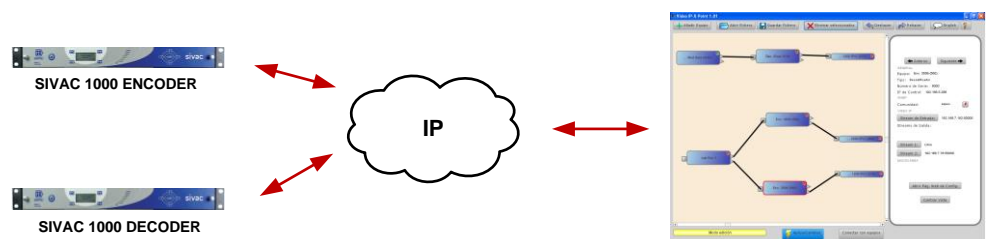
Video IP·X·Point informs about other unit characteristics:

- General Information: it shows name, model (encoder or decoder), serial number and control IP address.
- Equipment status: it notifies any alarm present in the unit. In case of encoders, it also reports if a pattern is being broadcasted.
- IP Video Information: It allows the user to view and modify the IP address and port, both in transmission and reception, of Video IP. In case of encoders pattern mode may also be set.

Video IP·X·Point allows to open the unit configuration webpage for complete configuration and control.

Video IP·X·Point makes the management of equipment via SNMPv2.

CLIENT - SERVER ARCHITECTURE



CHARACTERISTICS

- Simple configuration of Video IP routing of encoders and decoders
- Any change made in the equipment by other application is notified in real time
- Graphical modification of Video IP routing in a user friendly interface
- It is not required any knowledge of networks or IP routing
- Optimizes management of Video IP interface **FastIPSync®**
- It can save the Video IP routing of the units that manages to a file
- It allows to change the routing of units or load a new configuration using a configuration file
- It shows information for each unit: General information, Equipment status, Video IP configuration
- It allows easy access to the webpage of unit configuration
- All the management of units is made by the application via SNMPv2.

TECHNICAL SPECIFICATIONS

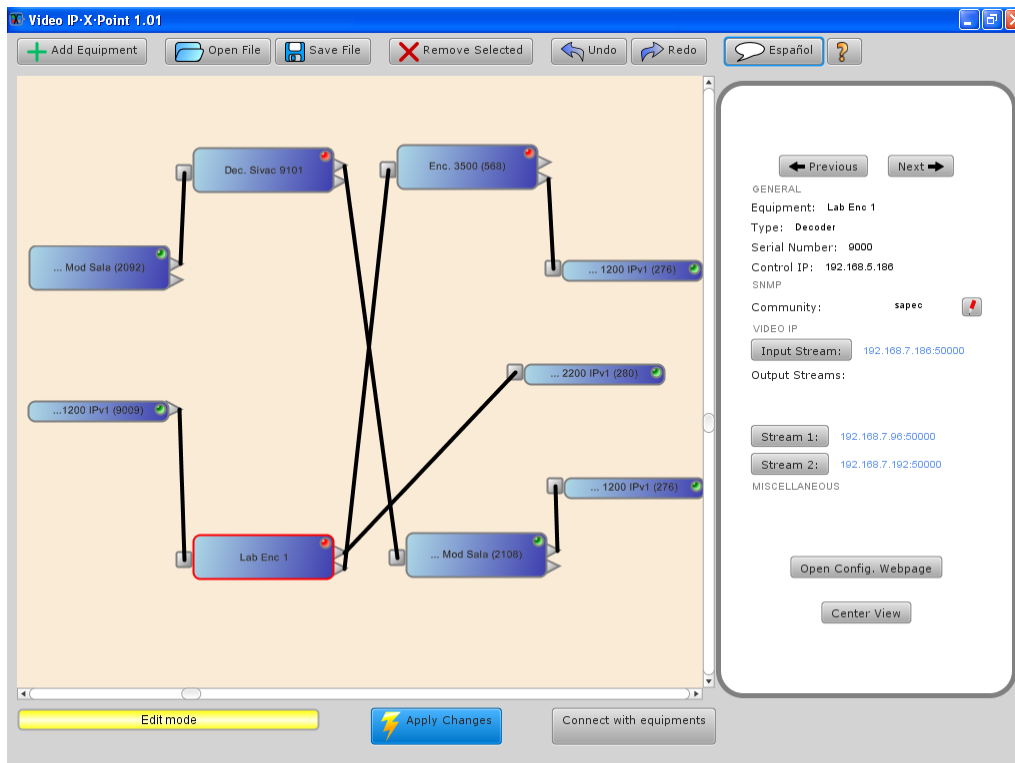
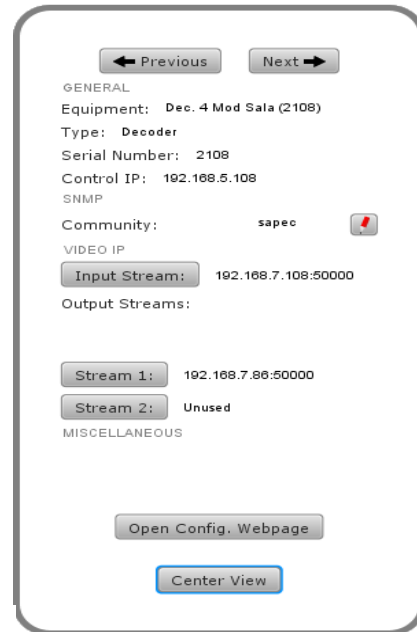
Software

- Graphical User Interface for setting the Video IP routing of SAPEC encoders and decoders.
- The graphical interface contains five areas:
 - Tools Buttons
 - Network Diagram
 - Status Bar
 - Connecting Computers Buttons
 - Unit Information Table
- It allows to manage any number encoders or decoders (*)
- Each equipment is represented by a box containing the name and an alarm indicator
- For encoders, there is notification of pattern broadcasting
- Input and output interfaces are depicted on the left and right of the box of each unit

(*) Maximum number of units managed may be limited by license

Minimum PC Requirements

- Processor: Pentium® 4 1,7 Ghz
- RAM Memory: 256 MB
- Hard Disk: 60 MB
- Ethernet Interface
- Operating System: Windows® XP Professional
Windows® 7



Local Distributor:

